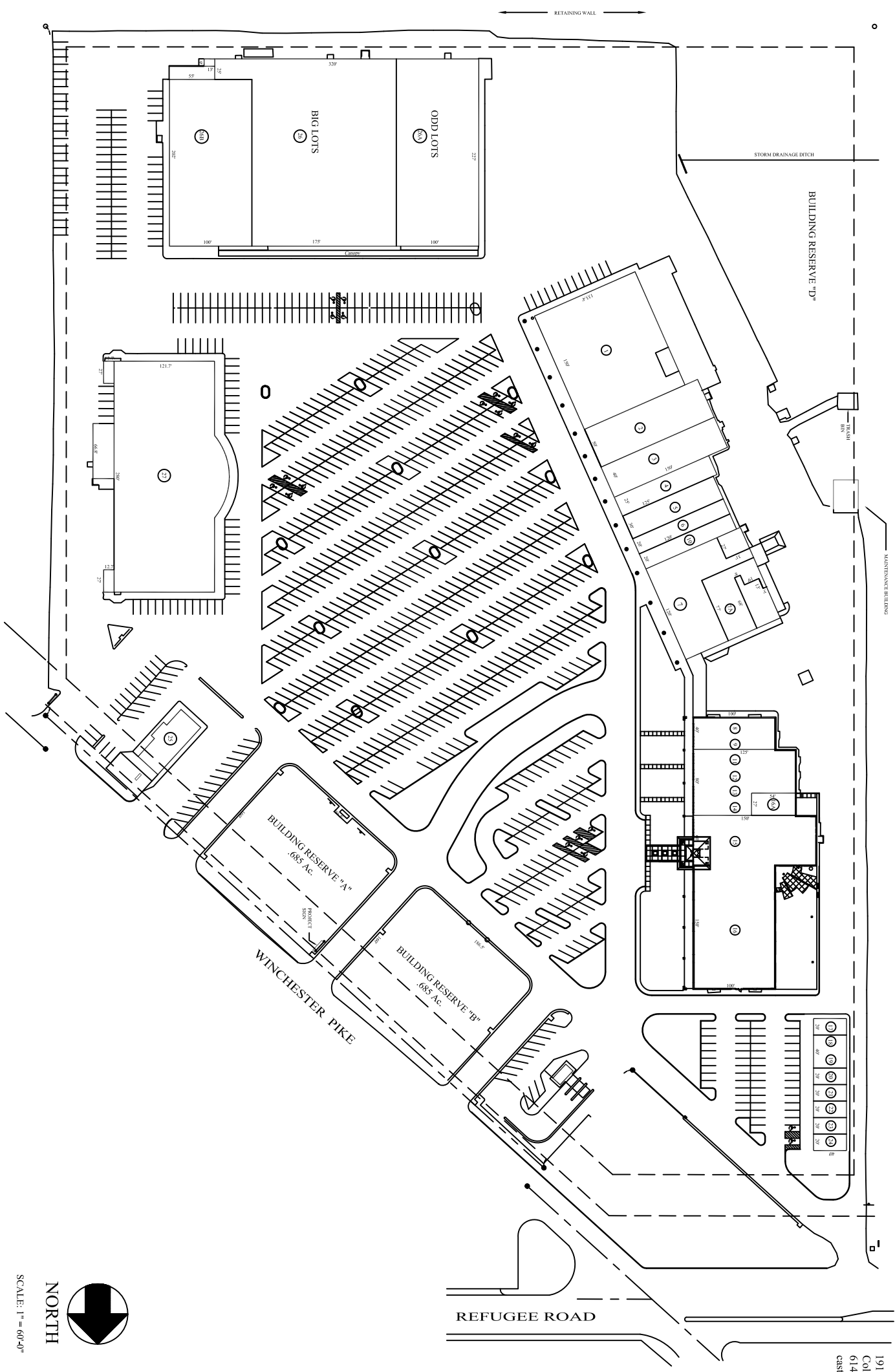
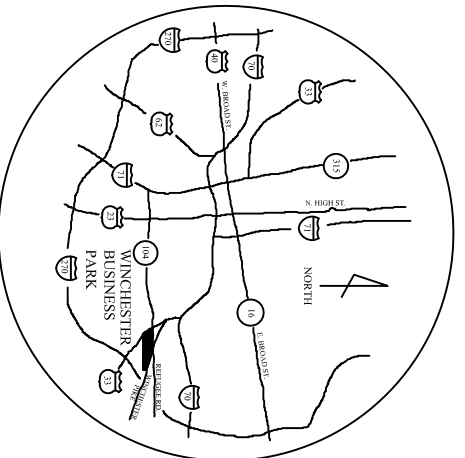


No.	TENANT	ADDRESS	SQ. FT.
1		2811 WINCHESTER PIKE	20,000
2	DOLLAR GENERAL	2807 " "	7,500
3		2805 " "	6,000
4	ART WORK FOUNDATION	2801 " "	3,125
5		2799 " "	3,600
6		2795 " "	2,400
7		2789 " "	13,000
8	GOVERNOR MADISON LOCAL SCHOOL DISTRICT	2763 " "	4,000
9		2759 " "	2,400
10		2753 " "	8,542
11	GOVERNOR MADISON LOCAL SCHOOL DISTRICT	2751 " "	
12		2747 " "	
13		2745 " "	
14		2741 " "	
15	KAPLAN UNIVERSITY	2745 " "	23,634
16	GOVERNOR MADISON LOCAL SCHOOL DISTRICT	2745 " "	1,475
17		2739 " "	800
18	PRINTING BY WILSON	2737 " "	800
19		2733 " "	1,600
20	BRIANS LOCK SERVICE	2729 " "	800
21	U-DO PERSONAL COMPUTER	2727 " "	800
22	BERWICK GALLERY BARBERS	2725 " "	800
23		2721 " "	800
24		2719 " "	800
25		2815 " "	3,477
26		2887 " "	
26A	BIG LOTS	2881 " "	83,750
26B		2845 " "	
27		2817 " "	37,901
28	US BANK	" "	312



**CASTO**  
 191 W. Nationwide Blvd., Suite 200  
 Columbus, Ohio 43215-2568  
 614.228.5331  
 castofo.com

**NORTH**  
 SCALE: 1" = 60'-0"  
**SITE DATA**  
 TOTAL TRACT ACREAGE = 28.54 acres

**WINCHESTER BUSINESS PARK**

DATE: 10-12-10